

Embedded Semantic Markup, schema.org, the Common Crawl, and Web Data Commons: What Big Web Data Means for Libraries and Archives

Jason Ronallo
NCSU Libraries
@ronallo

Slides: <https://ronallo.com/presentations/2013-dlf>

How Search Engines Work

1. Robots crawl the Web
2. Process and index crawl data
3. Try to answer search queries with the most relevant results



Semantics

Semantics in HTML

```
<ol>  
  <li>First item</li>  
  <li>Second item</li>  
  <li>Third item</li>  
</ol>
```

HTML5 Semantics

`<nav></nav>`

`<header></header>`

`<article>`

`<section></section>`

`<section></section>`

`</article>`

`<footer></footer>`

Trapped Knowledge

Embedded Semantic Markup

Embedded Semantic Markup Example

[Jason Ronallo](#) is the Associate Head of Digital Library Initiatives at [NCSU Libraries](#).

Embedded Semantic Markup Is Hidden Annotations Meant for Machines



Embedded Semantic Markup Exposed

Person has the properties name, url, jobTitle, and affiliation.
The affiliation is with a Library that has a name and url.

Person



Embedded Semantic Markup Structure

http://www.w3.org/ns/md#item	rdf:type	schema:Person	
	schema:affiliation	rdf:type	schema:Library
		schema:name	NCSU Libraries
		schema:url	http://lib.ncsu.edu
	schema:jobTitle	Associate Head of Digital Library Initiatives	
	schema:name	Jason Ronallo	
schema:url	http://twitter.com/ronallo		
rdfa:usesVocabulary	http://schema.org/		

Embedded Semantic Markup HTML

```
<span itemscope itemtype="Person">  
  <a itemprop="url"  
    href="http://twitter.com/ronallo">  
    <span itemprop="name">Jason Ronallo</span>  
</a> is the <span itemprop="jobTitle">  
  Associate Head of Digital Library  
  Initiatives</span> at  
<span itemprop="affiliation" itemscope  
  itemtype="Library">  
  <span itemprop="name">  
    <a itemprop="url" href="http://lib.ncsu.edu">  
    NCSU Libraries</a>  
  </span>  
</span>.  
</span>
```

JSON Serialization

```
{ "items": [
  { "type": [ "http://schema.org/Person" ],
    "properties": {
      "url": [ "http://twitter.com/ronallo" ],
      "name": [ "Jason Ronallo" ],
      "jobTitle": [ "Associate Head of Digital Library Initiatives" ],
      "affiliation": [
        { "type": [ "http://schema.org/Library" ],
          "properties": {
            "name": [ "NCSU Libraries" ],
            "url": [ "http://lib.ncsu.edu/" ]
          }
        }
      ]
    }
  }
]
}
```

RDF (Turtle)

@prefix md: <http://www.w3.org/ns/md#> .

@prefix rdf: <http://www.w3.org/1999/02/22-rdf-syntax-ns#> .

@prefix rdfs: <http://www.w3.org/ns/rdfs#> .

@prefix schema: <http://schema.org/> .

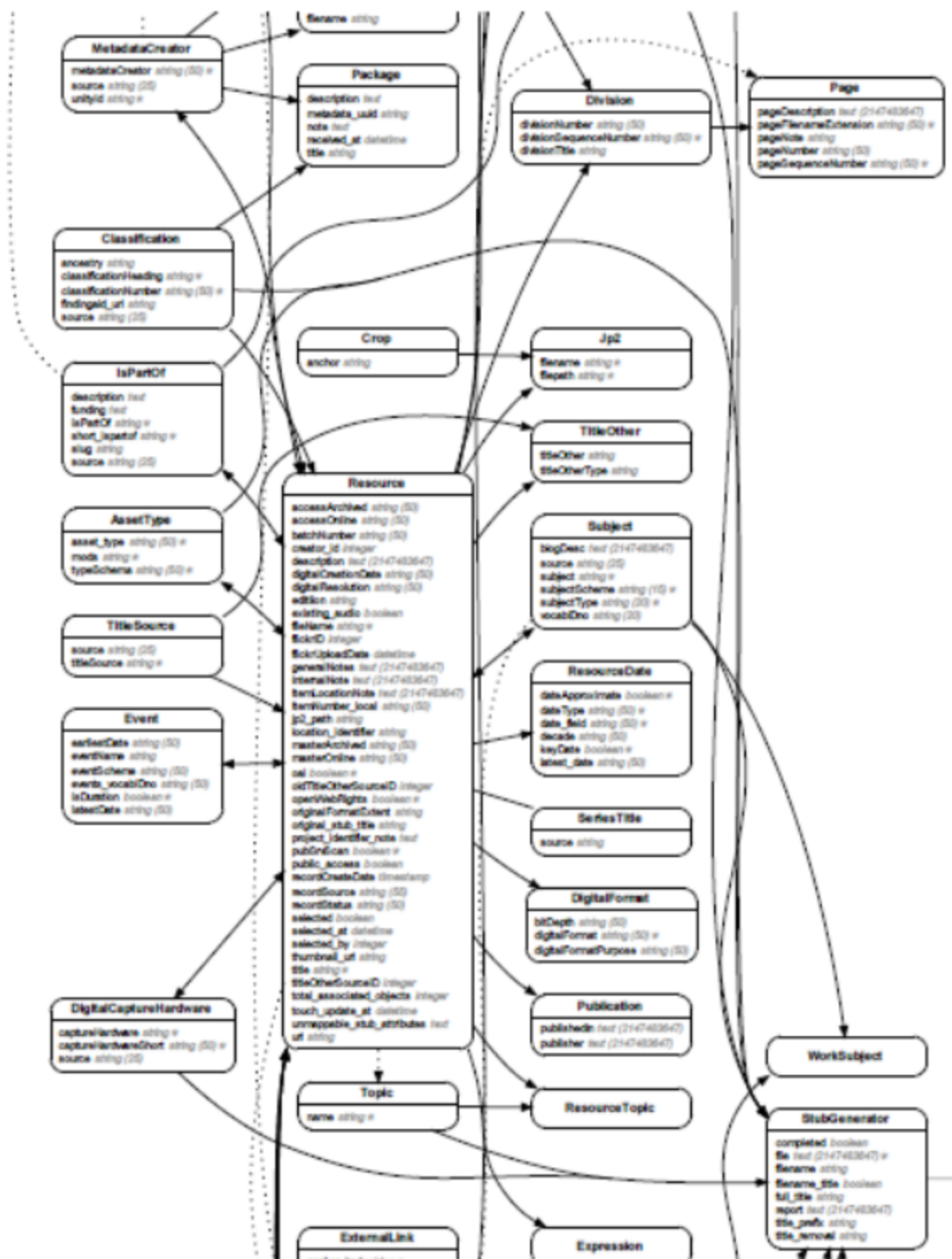
```
<> md:item ( [ a schema:Person;
  schema:affiliation [ a schema:Library;
    schema:name "NCSU Libraries";
    schema:url <http://lib.ncsu.edu> ];
  schema:jobTitle "Associate Head of Digital Library Initiatives";
  schema:name "Jason Ronallo";
  schema:url <http://twitter.com/ronallo> ] );
rdfs:usesVocabulary schema: .
```

Types of Embedded Semantic Markup

- Microformats
- RDFa (Lite)
- Microdata

Why use embedded semantic markup?

- A way to *structure* data in HTML
- To communicate with machines
- Your eyes are on the Web site (Maintain this data in one place and keep it in sync)
- Rich Metadata to Rich Embedded Data



The End of Dumbed Down Metadata

Vocabularies for Understanding

Schema.org

Schema.org

- Shared, Web-scale, single-stop vocabulary for describing the content of Web pages.
- Released 2011
- Maintained by the major search engines (Bing, Google, Yahoo, Yandex)
- Everything is a Thing
- 407+ Types of Things (Numbers from early 2013)
- 545+ Properties of Things
- Everything from Airport to Library to Volcano
- Expanding and open to proposals to update the schema (see SchemaBibEx W3C Community Group)
- Single site for documentation. Easy to use. No fragmentation.

The Type Hierarchy

Here is the entire hierarchy in a single file.

Types that have multiple parents are expanded out only once and have an asterisk

DataType

Boolean

Date

DateTime

Number

Float

Integer

Text

URL

Time

Thing: additionalType, description, image, name, sameAs, url

Action: agent, endTime, instrument, location, object, participant, result, startTime

AchieveAction

Thing > CreativeWork

The most generic kind of creative work, including books, movies, photographs, software programs, etc.

Property	Expected Type	Description
Properties from <u>Thing</u>		
<u>additionalType</u>	URL	An additional type for the item, typically used for adding more specific types from external vocabularies in microdata syntax. This is a relationship between something and a class that the thing is in. In RDFa syntax, it is better to use the native RDFa syntax - the 'typeof' attribute - for multiple types. Schema.org tools may have only weaker understanding of extra types, in particular those defined externally.
<u>description</u>	Text	A short description of the item.
<u>image</u>	URL	URL of an image of the item.
<u>name</u>	Text	The name of the item.
<u>sameAs</u>	URL	URL of a reference Web page that unambiguously indicates the item's identity. E.g. the URL of the item's Wikipedia page, Freebase page, or official website.
<u>url</u>	URL	URL of the item.
Properties from <u>CreativeWork</u>		
<u>about</u>	<u>Thing</u>	The subject matter of the content.
<u>accountablePerson</u>	<u>Person</u>	Specifies the Person that is legally accountable for the CreativeWork.
<u>aggregateRating</u>	<u>AggregateRating</u>	The overall rating, based on a collection of reviews or ratings, of the item.
<u>alternativeHeadline</u>	Text	A secondary title of the CreativeWork.
<u>associatedMedia</u>	<u>MediaObject</u>	The media objects that encode this creative work. This property is a synonym for encodings.
<u>audience</u>	<u>Audience</u>	The intended audience of the item, i.e. the group for whom the item was created.

Why use Schema.org?

- Growing implementation base.
- Software implementations (CMS).
- With implementations and known consumers, other consumers will follow.

Improve
Discoverability
on the Open
Web

Rich Snippets

[Vegan Golden Vanilla Cupcakes](#)

www.food.com/.../vegan-golden-vanilla-cupcakes-3023...



★★★★★ 23 reviews - 35 mins - 148.1 cal

This cupcake recipe is from the book **Vegan Cupcakes Take Over The World**. You can make this recipe using soy margarine or canola oil. IF USING OIL ...

Ingredients: apple cider, flour, cornstarch, baking powder, baking soda, canola ...

Library Examples

- NCSU Libraries
- Future Possibilities

Perspective drawing

Grove Arcade

[Charles Parker Papers, 1924-1929 \(MC00383\)](#)



A Grove Arcade Drawing is a <http://schema.org/CreativeWork>

Perspective drawing

← name

CreativeWork

Grove Arcade

Charles Parker Papers, 1924-1929 (MC00383)

image



Item Information

Item information

Title:

Perspective drawing

Topics:

Architecture

Subjects:

Perspective views

Sketches

Original Format:

Tracings; 580mm x 930mm

Item identifier:

mc00383-001-ff0004-001-001_0005

Genre:

Design and construction documents

Architectural drawings

Digital Project:

Beaux Arts to Modernism

Source information

Repository:

[Special Collections Research Center at NCSU Libraries](#)

Collection:

Charles Parker Papers, 1924-1929 (MC00383) [↗](#) held by
[Special Collections Research Center at NCSU Libraries](#) [↗](#)

Note field:

Not all materials from the physical collection may have been scanned. Images may have been enhanced for web access.

Rights:

For questions regarding copyright or permissions, please refer to our [Reproduction, Use, Citation, and Copyright page](#) (<http://d.lib.ncsu.edu/collections/about>).

Funding:

Digitization of this image was partially supported with federal Library Services and Technology Act (LSTA) funds made possible through a grant from the Institute of Museum and Library Services, and administered by the State Library of North Carolina, a division of the Department of Cultural Resources.

Embedded Item Information

Item information

Title:

Perspective drawing

Topics:

Architecture

keywords

Subjects:

Perspective views

Sketches

Physical Form:

Tracings; 580mm x 930mm

description

Item Identifier:

mc00383-001-ff0004-001-001_0005

Genre:

Design and construction documents

Architectural drawings

genre

Digital Project:

Beaux Arts to Modernism

publisher

Organization
name
url

Source information

Repository:

Special Collections Research Center at NCSU Libraries

Collection:

Charles Parker Papers, 1924-1929 (MC00383) held by Special Collections Research Center at NCSU Libraries

Note field:

Not all materials from the physical collection may have been scanned. Images may have been enhanced for web access.

Rights:

For questions regarding copyright or permissions, please refer to our [Reproduction, Use, Citation, and Copyright page](#) (<http://d.lib.ncsu.edu/collections/about>).

Funding:

Digitization of this image was partially supported with federal Library Services and Technology Act (LSTA) funds made possible through a grant from the Institute of Museum and Library Services, and administered by the State Library of North Carolina, a division of the Department of Cultural Resources.

Building Information

Building: Grove Arcade (Asheville, Buncombe County, North Carolina)

Architect:

[Parker, Charles N.](#) ⓘ

Built:

1924

Street:

1 Page Avenue

Community:

Asheville

State:

North Carolina

Zip:

28801

Provenance note:

E. W. Grove, first owner; Walter Taylor and Associates, second owner.

Architectural note:

The structure was initially intended as a skyscraper, and the use of ivory-glazed terra-cotta and decorative griffins lend the structure a unique appearance. The structure's molded panels include an image of the architect, Charles N. Parker.

Historical note:

The arcade is listed on the National Register of Historic Places. It was occupied by the federal government in 1942.

Location:

[Asheville \(N.C.\)](#)

Subjects:

[Commercial buildings](#)

Latitude, Longitude:

[35.595203, -82.555895](#) ⓘ


External Resources:

[Grove Arcade: History](#) ⓘ

Embedded Building Information

LandmarksOrHistoricalBuildings

Building: **Grove Arcade (Asheville, Buncombe County, North Carolina)** ← **name**

creator ← **Person name & url**
Parker, Charles N. 

events ← **Event startDate**
1924

streetAddress
1 Page Avenue

address ← **addressLocality PostalAddress**
Community: Asheville


addressRegion
State: North Carolina

postalCode
Zip: 28801

description
Provenance note: E. W. Grove, first owner; Walter Taylor and Associates, second owner.
Architectural note: The structure was initially intended as a skyscraper, and the use of ivory-glazed terracotta and decorative griffins lend the structure a unique appearance. The structure's molded panels include an image of the architect, Charles N. Parker.
Historical note: The arcade is listed on the National Register of Historic Places. It was occupied by the federal government in 1942.

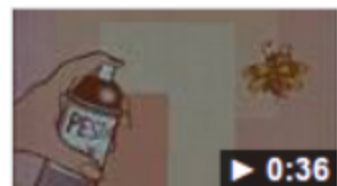
keywords ← **Commercial buildings**

geo ← **latitude & longitude**
GeoCoordinates 35.595203, -82.555895

External Resources:
Grove Arcade: History 

Rich Snippets: Video

[USDA Public Service Film, "Bug Sprays and Pets" a P...](#)



d.lib.ncsu.edu/collections/.../ua024-002-bx0149-066-0...

May 5, 2013

Using a **bug spray** in your home? That's fine. But make sure you remove **pets** and their food and water first ...

Third result in Google video search for "bug sprays and pets."

[Future Farmers of America with James Baxter Hunt, Jr. - Student ...](#)



d.lib.ncsu.edu/.../future-farmers-of-america-hunt ▾

Oct 23, 2012

Governor **James Baxter Hunt**, Jr. describes his experiences in high school as a member of the **Future ...**

Second result in Google for "jim hunt future farmers".

Future Possibilities

Answers instead of Search Results

[Alan Alda - Wikipedia, the free encyclopedia](#)

en.wikipedia.org/wiki/Alan_Alda

Alphonso Joseph D'Abruzzo (born January 28, 1936), better known as **Alan Alda**, is an American actor, director, screenwriter, and author. A six-time Emmy ...

[Robert Alda](#) - [Elizabeth Alda](#) - [Arlene Alda](#) - [Same Time, Next Year](#) (film)

[Alan Alda - IMDb](#)

www.imdb.com/name/nm0000257/

Includes filmography, biography, and upcoming television appearances.

[Biography](#) - [By type](#) - [135 photos](#) - [Awards](#)

[Alan Alda](#)

www.alanalda.com/

A description for this result is not available because of this site's robots.txt – learn more.

[Alan Alda Challenges Scientists to Explain: What Is Ti...](#)

[news.sciencemag.org](#) › [News](#) › [ScienceInsider](#) › [December](#)



Alan Alda

Alphonso Joseph D'Abruzzo, better known as Alan Alda, is an American actor, director, screenwriter, and author. [Wikipedia](#)

Born: January 28, 1936 (age 76), [The Bronx](#)

Spouse: [Arlene Alda](#) (m. 1957)

Parents: [Robert Alda](#), [Joan Browne](#)

Books: [Never Have Your Dog Stuffed And Other Things I've Learned](#), [More](#)

Children: [Elizabeth Alda](#), [Beatrice Alda](#)

Movies and TV shows

Web Images Maps Shopping More Search tools

About 928,000 results (0.27 seconds)

About the **D. H. Hill Library** | NCSU Libraries

www.lib.ncsu.edu/about/dhhill

The **D. H. Hill Library** is NC State University's main library, located on the north campus. The library features the Learning Commons, one of the top student ...

NCSU Libraries

www.lib.ncsu.edu/

NCSU Libraries · Ask Us · My Account · Hours · FAQ · Log Out ... Today's Hours: 24 Hours at **D.H. Hill Library**. IE warning. You're seeing a different version of this ...

4.6 ★★★★★ 15 Google reviews · Write a review

2 W Broughton Dr Raleigh, NC 27695
(919) 515-3364

Reserve a Room - The James B. Hunt Jr. Library

D. H. Hill Library Map | NCSU Libraries

www.lib.ncsu.edu/libmaps

D. H. Hill Library Map. Printer-friendly version. **D.H. Hill Library** map. NCSU Libraries 2 Broughton Drive, Raleigh, NC 27695-7111 (919) 515-3364 | Contact Us.

D.H. Hill Library - North Carolina State University

www.ncsu.edu/facilities/buildings/dhhill.html

However, a larger library was needed and the **D.H. Hill Library** opened in 1953, while Brooks Hall became the home of the School of Design. The library was ...

D. H. Hill Library - Wikipedia, the free encyclopedia

en.wikipedia.org/wiki/D._H._Hill_Library

The **D. H. Hill Library** is the main library at North Carolina State University. It is the third building to house NCSU Libraries, following Brooks Hall and Holladay ...

Daniel Harvey Hill - Wikipedia, the free encyclopedia

en.wikipedia.org/wiki/Daniel_Harvey_Hill



D. H. Hill Library

Directions

The D. H. Hill Library is the main library at North Carolina State University. It is the third building to house NCSU Libraries, following Brooks Hall and Holladay Hall. Wikipedia

Address: 2 W Broughton Dr, Raleigh, NC 27695

Hours: Friday Open 24 hours - See all

Reviews

4.6 ★★★★★ 15 Google reviews

People also search for



Bronze



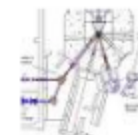
Bank Field



Diddie



Center



North

Search, or say Google



22 minutes to Hunt Library, Centennial Campus



Wolfline #8 from Scott Hall

Hunt Library hours: 7:00 a.m. - 11:00 p.m.

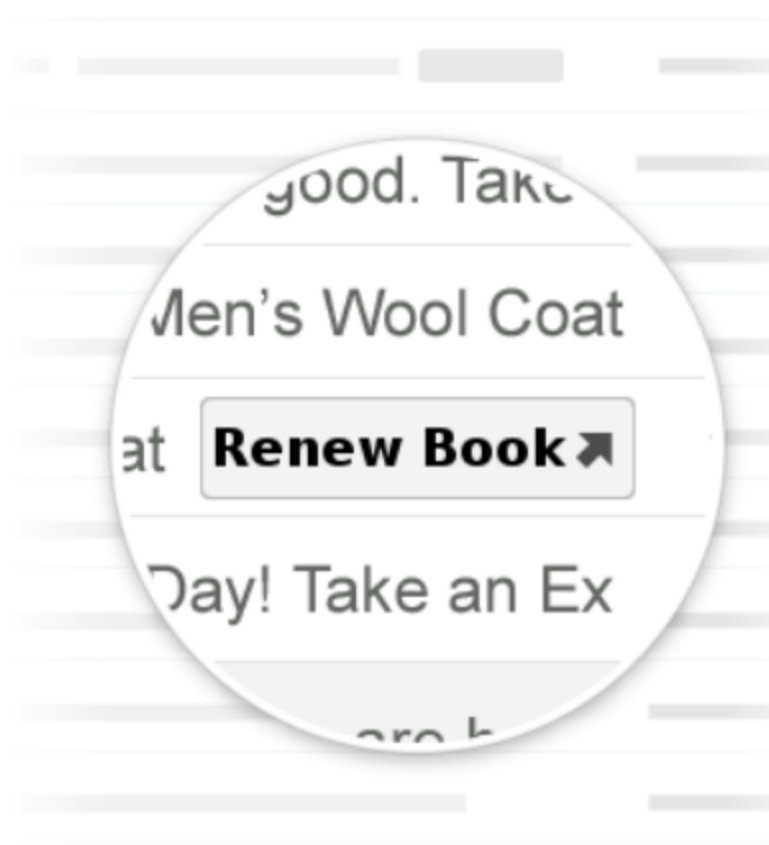
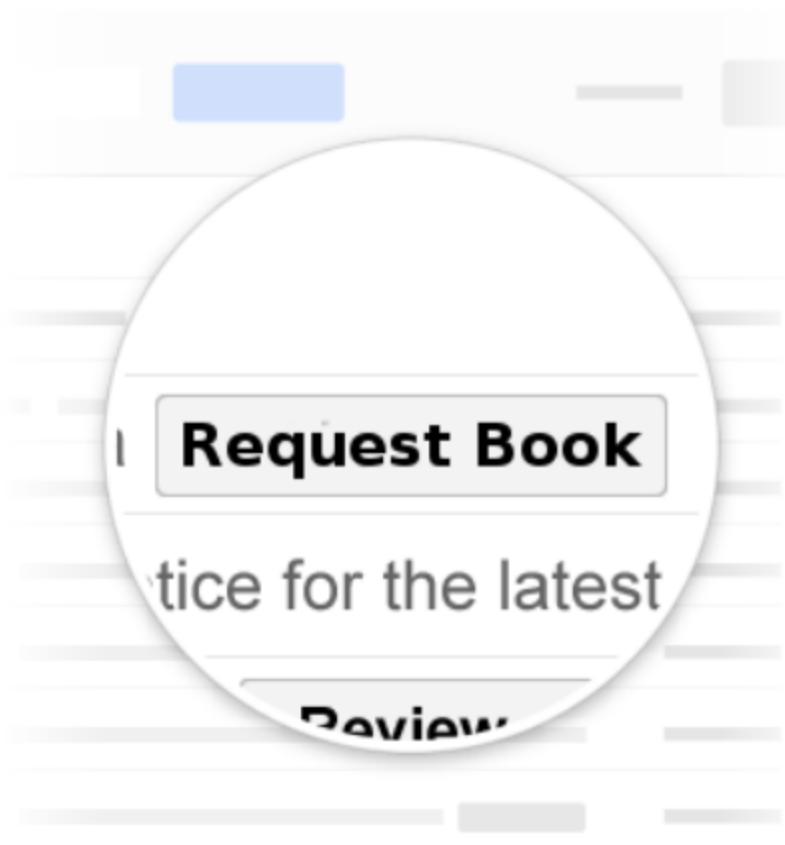
View nearby events



Fabulous Faculty @ DH Hill Library - Brickyard Farmer's Market - Read Smart Book Discussion (Salt Sugar Fat)

Save the Time
of the Reader

Schema.org Activities in Gmail



Embedded Semantic Markup +
a Web-scale Vocabulary =
The Semantic Web?

Yes

Research

Research Questions

Are academic institutions publishing embedded semantic markup?

Are academic libraries?

What kind of data are they publishing?

What syntaxes are they using?

What vocabularies?

How can you even answer these questions then?

- Ask them
- Crawl the Web
- Beg a search engine
- Give up

Common Crawl

Common Crawl is a non-profit foundation dedicated to providing an open repository of web crawl data that can be accessed and analyzed by everyone.

- Uses PageRank so is a snapshot of the current most popular part of the Web
- Over 5 billion Web pages (3,005,629,093 for the most recent (2012) set)
- 40,600,000 domains
- ~81TB total
- Big Web Data



<http://commoncrawl.org/>

Uses of the Common Crawl

- Free to access, cheap to use (AWS)
- Startups trying out business ideas (Swiftkey)
- Norvig Web Data Science Award
 - Associating concepts on the Web
 - Reading-level analysis and search engine
- Teaching Big Data skills in colleges

Common Crawl URL Search

<http://urlsearch.commoncrawl.org/?q=lib.ncsu.edu>



Common Crawl

Submit

[FAQ](#)

4033

Download as: [JSON](#)

<http://bliss.lib.ncsu.edu/>
<http://blogs.lib.ncsu.edu/>
<http://d.lib.ncsu.edu/>
<http://d.lib.ncsu.edu/collections/>
<http://d.lib.ncsu.edu/collections/catalog/0228376>
<http://d.lib.ncsu.edu/collections/catalog/bh2127pnc001>
http://d.lib.ncsu.edu/collections/catalog/unccmc00145-002-ff0003-002-004_0002
<http://databases.lib.ncsu.edu/>
<http://dewey.lib.ncsu.edu/>
<http://dli.lib.ncsu.edu/>
<http://ematb.lib.ncsu.edu/>
<http://etd.lib.ncsu.edu/>
<http://ftp.lib.ncsu.edu/>
http://geodata.lib.ncsu.edu/dem/nc_20f

How to get to the
Embedded Semantic
Markup?

Web Data Commons

Extracting Structured Data from the Common Crawl

Domains with Triples	2,286,277
Typed Entities	1,811,471,956
Triples/Statements	7,350,953,995

Percentage of the Common Crawl corpus with embedded structured data? 12.3%

Cost to extract the data from the Common Crawl: \$398

<http://webdatacommons.org/>

What's an N-Quad?

`_:node6eecc231551a72e90e7efb3dc3fc26`

<http://schema.org/Photograph/name>

"Mary Travers singing live on stage"

<http://d.lib.ncsu.edu/collections/catalog/0228376> .

Subject Predicate Object ***Context***

An N-Quad is an RDF statement that also includes a context piece at the end. Context is the URL of the HTML page from which the data was extracted.

Line-based format makes it easier to do some rough parsing.

Summary Methodology

1. Grab all of the Web Data Commons extracted N-Quads (7,350,953,995 of them) from the August 2012 Common Crawl corpus.
2. Use commandline tools (cat & grep) to boil things down to just N-Quads that contain ".edu" somewhere, anywhere.
3. Analyze all of these RDF statements and output CSV.
4. Index in Solr and view with Blacklight.

Extraction code and documentation links:

<https://ronallo.com/presentations/2013-dlf>

Caveats

I have not done any calculations to determine what proportion of each site was crawled. So the comparisons here are just raw numbers. A very large university site might have lots of crawled pages, but it could be a smaller percentage of their whole website than a smaller number here from a university with a smaller website.

For the libraries they may have lots of materials that are not under the library subdomain which would skew those numbers significantly. I was also only looking for subdomains that included "lib.", "library.", and "libraries.". It could be that a lot of academic libraries have their site under a subdirectory or some other subdomain.

Total Resulting Statements (N-Quads)

All statements	7,350,953,995
All .edu	12,182,975
.edu context	8,178,985

Research Questions

Are academic institutions publishing embedded semantic markup?

Are academic libraries?

What kind of data are they publishing?

What syntaxes are they using?

What vocabularies?

NC State Univ. Peer Institutions

Colorado State Univ.

Georgia Institute of
Technology

Iowa State Univ.

Michigan State Univ.

Ohio State Univ.

Pennsylvania State Univ.

Purdue Univ.

Rutgers Univ.-New
Brunswick

Texas A & M Univ.

Univ. of Arizona

Univ. of California-Davis

Univ. of Florida

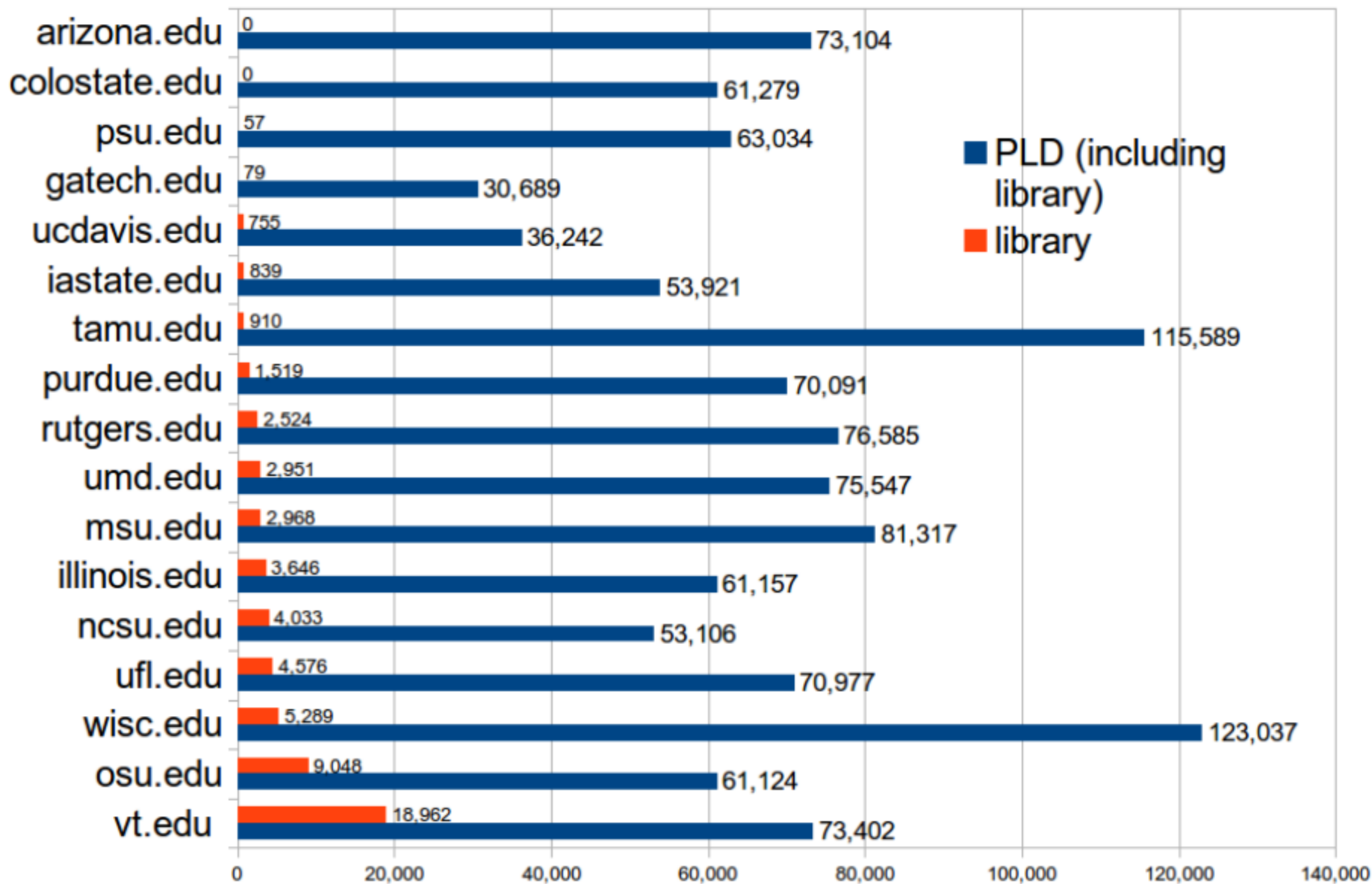
Univ. of Illinois at Urbana-
Champaign

Univ. of Maryland-College
Park

Univ. of Wisconsin-Madison

Virginia Polytechnic and
State Univ.

Common Crawl URLs



% of Common Crawl URLs w/ Embedded Semantic Markup

psu.edu	18.35%	gatech.edu	1.20%
illinois.edu	8.87%	ncsu.edu	1.19%
ucdavis.edu	5.58%	iastate.edu	0.71%
osu.edu	3.87%	wisc.edu	0.69%
rutgers.edu	3.45%	umd.edu	0.35%
arizona.edu	1.97%	colostate.edu	0.26%
msu.edu	1.67%	purdue.edu	0.20%
tamu.edu	1.58%	vt.edu	0.16%
ufl.edu	1.51%		

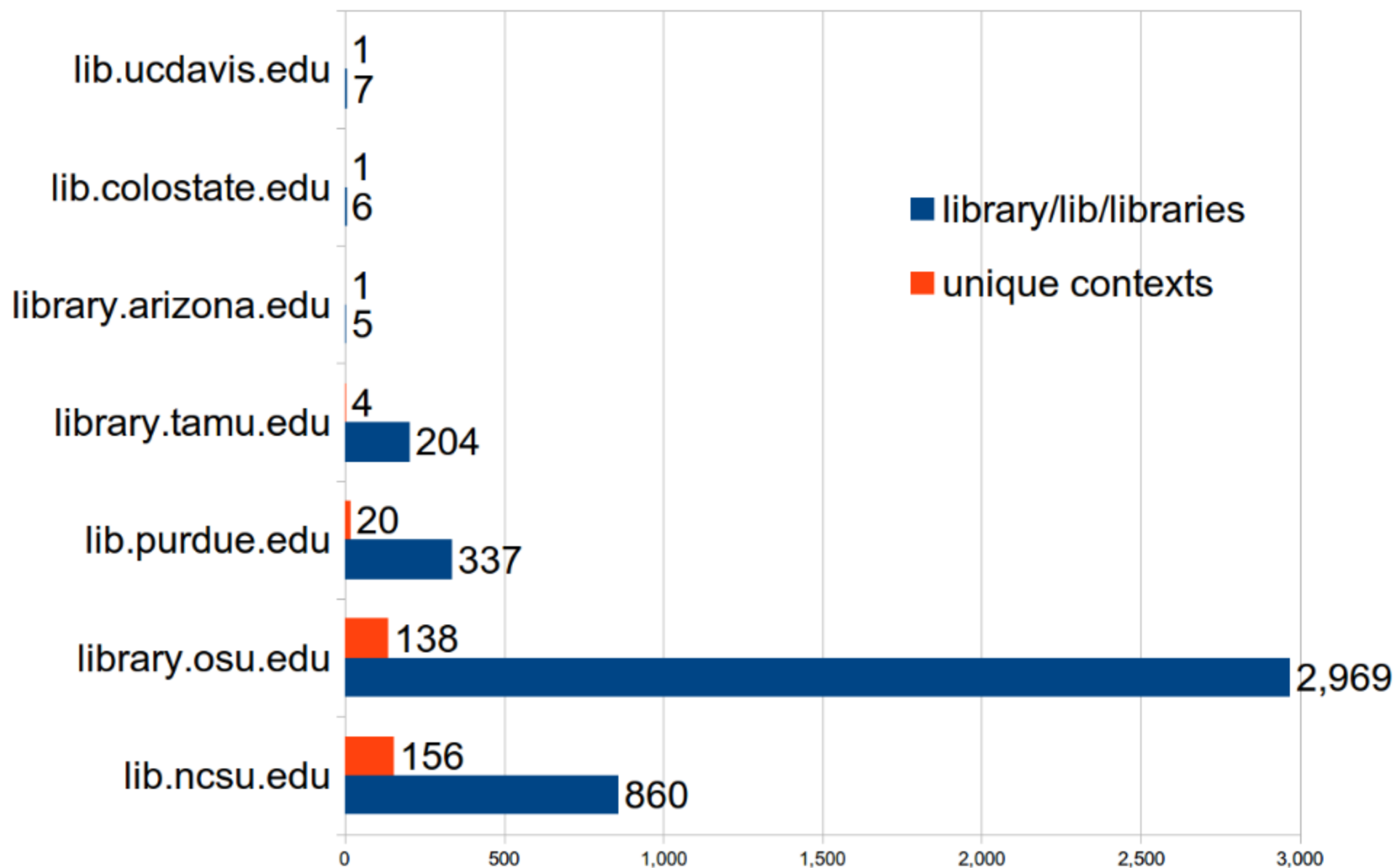
What kind of content is psu.edu describing?

- hcard (Microformat)
- hcalendar (Microformat)
- open graph protocol (RDFa)

Web Data Commons Library Contexts

- lib.*.edu
- library.*.edu
- libraries.*.edu

Web Data Commons Library Triples and Unique Contexts



General Academic Institution Stats

Syntaxes Used by Academic Institutions

mf-hcard	5,854,493
rdfa	1,337,528
mf-hcalendar	770,228
mf-xfn	456,184
microdata	285,296
mf-geo	51,565
mf-hresume	5,363
mf-hreview	2,908
mf-hlisting	48

Schema.org Types Used by Academic Institutions

LocalBusiness	20,565	CollectionPage	1,275
PostalAddress	17,267	Blog	991
CollegeOrUniversity	11,554	University	550
Organization	10,172	CollegeorUniversity	420
WebPage	8,846	Review	372
Article	8,351	NewsArticle	316
BlogPosting	3,511	Place	313
Person	2,071	ScholarlyArticle	298
Event	1,539	SportsEvent	289
EducationalOrganization	1,508	Thing	168

Some library and archives-related schema.org types

CollectionPage	1275	duke.edu ncsu.edu
ScholarlyArticle	298	santafe.edu
ContactPoint	139	lynn.edu duke.edu
Photograph	20	ncsu.edu
Library	18	berkeley.edu
CreativeWork	12	ncsu.edu
LandmarksOrHistoricalBuildings	11	ncsu.edu
Book	6	ohiolink.edu
GeoCoordinates	4	marshall.edu

What about digital collections?

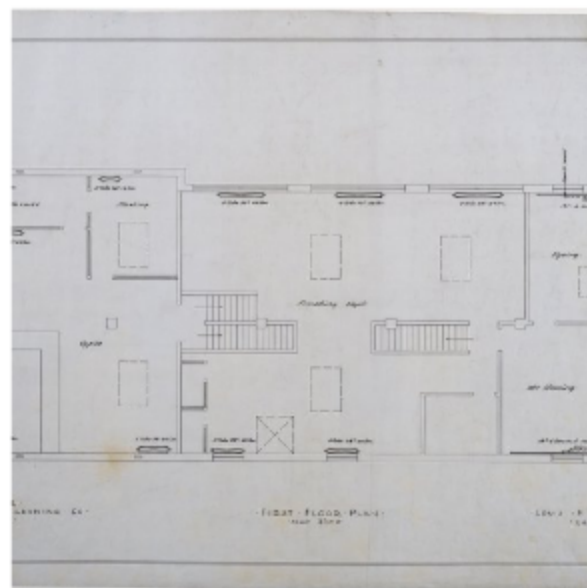
- Are digital collections represented in the Common Crawl?
- Are they publishing embedded semantic markup?

Have a digital collection with a sitemap? Please, go to this URL right now:

<http://go.ncsu.edu/sitemap>

Digital Collections at NCSU: Rare & Unique Materials

1. <http://d.lib.ncsu.edu/collections/>
2. <http://d.lib.ncsu.edu/collections/catalog/0228376>
3. <http://d.lib.ncsu.edu/collections/catalog/bh2127pnc001>
4. http://d.lib.ncsu.edu/collections/catalog/unccmc00145-002-ff0003-002-004_0002



2013 Crawl

Libraries as Producers and Consumers of Big Web Data

Libraries as Producers

- Improve discoverability of our services and collections.
- The public interoperability API to our data (replace library-specific APIs).
- Enable new services we haven't thought of.

Libraries as Consumers

- Learn from what others are successfully doing.
- Help develop best practices for publishing data in HTML.
- Create (or seed) domain-specific vertical search engines.
- Web preservation.
- Become more familiar with handling big data.

Open Research

Code, documentation, data sets, and slides with speaker notes: <http://ronallo.com/presentations/2013-dlf>

Please submit your digital collection sitemaps:
<http://go.ncsu.edu/sitemap>

Links

- [http://en.wikipedia.org/wiki/Microdata_\(HTML\)](http://en.wikipedia.org/wiki/Microdata_(HTML))
- <http://en.wikipedia.org/wiki/RDFa>
- <http://schema.org/>
- <http://www.w3.org/community/schemabibex/>
- <http://commoncrawl.org/> and URL search tool
- <http://webdatacommons.org/>
- Norvig Web Data Science Award
<http://norvigaward.github.io/>

NCSU Links

NCSU sites that use embedded semantic markup (Microdata) and Schema.org:

- [Student Leadership Initiative](http://d.lib.ncsu.edu/student-leaders) <http://d.lib.ncsu.edu/student-leaders>
- [NCSU Libraries Rare & Unique Materials](http://d.lib.ncsu.edu/collections)
<http://d.lib.ncsu.edu/collections>

Credits

- Friendly Robot by Sean Hannan
- Google Now HTML and CSS derived from Bennett Feely
<http://codepen.io/bennettfeely/details/Ftczh>

Jason Ronallo

[@ronallo](#)

jronallo@gmail.com

<http://ronallo.com>

Please submit your digital collection sitemaps:

<http://go.ncsu.edu/sitemap>

Code, documentation, data sets, and slides with speaker notes: <http://ronallo.com/presentations/2013-dlf>